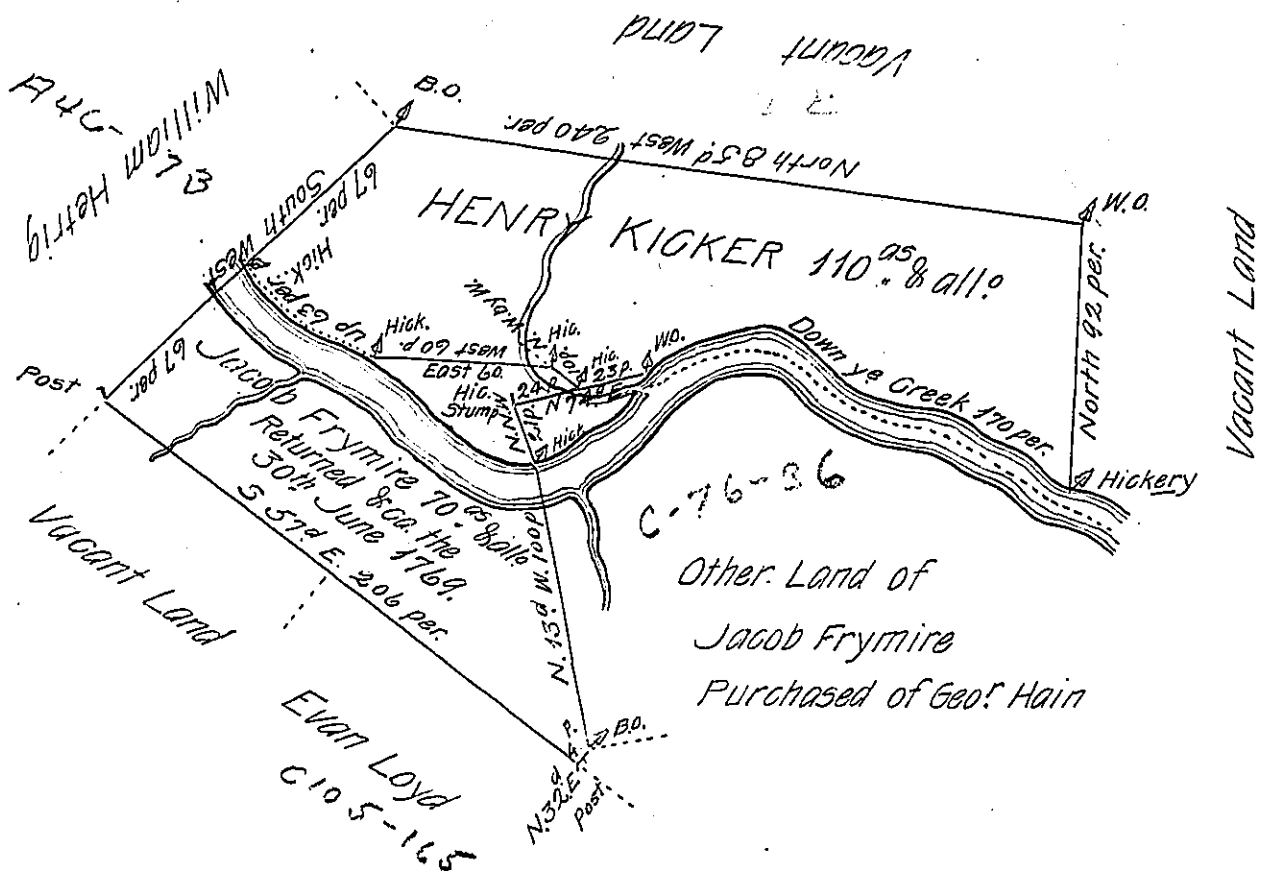


Then to Divide 5^d Land Between him and his Son in Law
Henry Kicker Begins at a hick. 24 per. N. 74^d E. of y^e hick
Stump y^e N. W. by W. 10 per. to a Hickery y^e West. 60 per.
to a hick. By Tulpehogan. y^e up D^o on y^e Several Courses
there of 63 per. to a hick. in Wm Hettrigs Line &c.



By Virtue of Warrant Dated ye 28th Day of September AD 1737 The Above Described
Tract of Land was Surveyed to Jacob Frymire in Heidelberg Townp. Lan County Begin-
ing at a Post in William Hettrigs Line Thence S. 57^d E. by Vacant Land & Evan Loyds
Land 206 per to a post y^e N. 32^d E. By Vct. L^d 4 per. to a B. O. y^e N. 13^d W. by Other
Land of S^d Frymire 100 per. to a Hickory By Tulpehogan-y^e N. N. W. by D^o J. F. 24
per. to a hick. Stump y^e N 74^d E. 47 per. to a W. O. By 5^d Creek &c.
Surd 7th of 9th 1744. Sam^l Lightfoot.

IN TESTIMONY that the above is a copy of the original remaining on file in
the Department of Internal Affairs of Pennsylvania, made
conformably to an Act of Assembly approved the 16th day of
February, 1833, I have hereunto set my Hand and caused
the Seal of said Department to be affixed at Harrisburg,
this eight day of June 1905.

Loach
Secretary of Internal Affairs.